

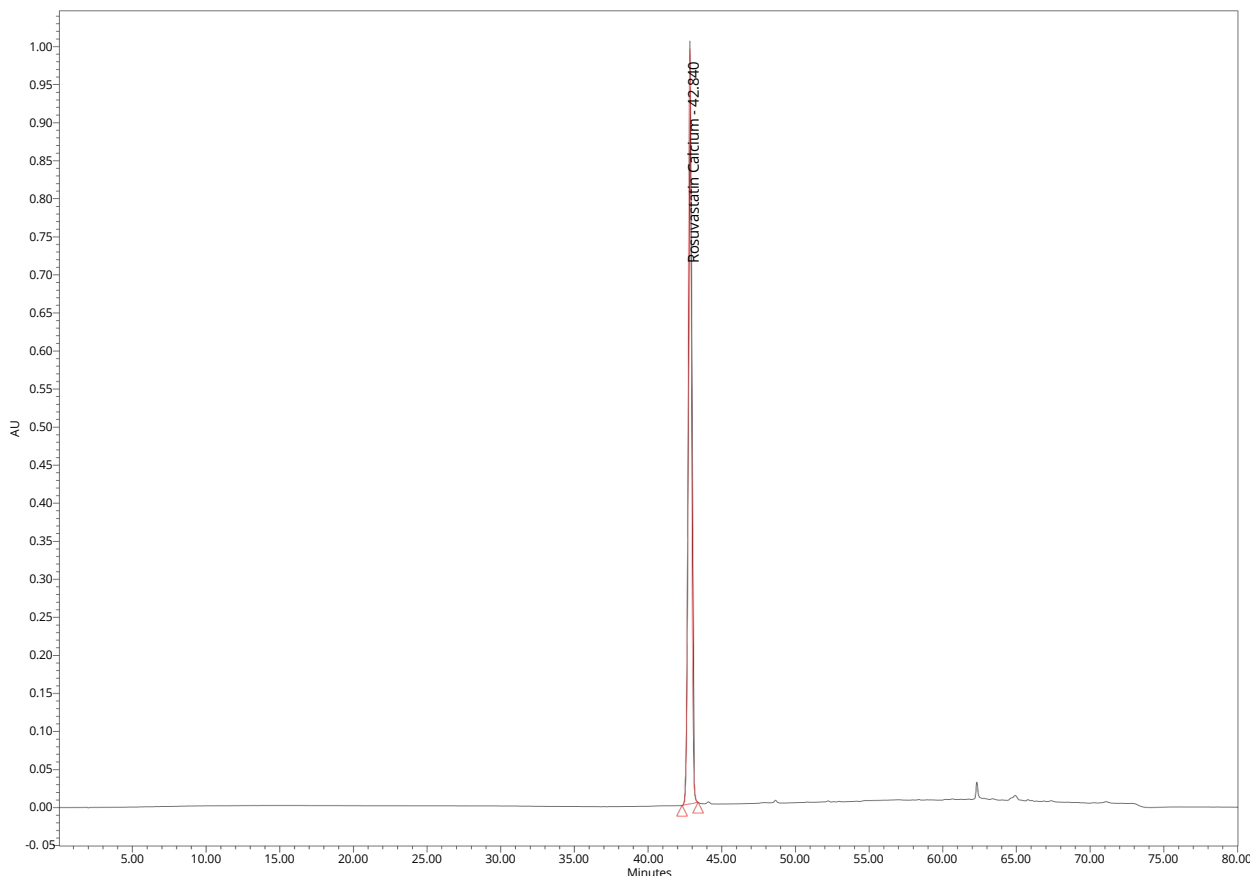


**RIKI GLOBAL**  
performance through innovation  
Authorized Distributor

## Generix Columns

### Rosuvastatin Calcium

#### ACE Generix C18(2) 3 $\mu$ m 150 x 4.6 mm



#### Test Condition

**Column:** ACE Generix C18(2) 3 $\mu$ m 150 x 4.6 mm

**Part No.:** Gen-5C18(2)-1546

**Flow Rate:** 0.75 mL/min

**Injection volume:** 10  $\mu$ L

**Detection:** PDA 242 nm

**Mobile Phase:** Acetonitrile : 0.037 g/L  
Disodium Edetate & 10.8 g/L of 1-Octane  
Sulfonic Acid (40:960)

**Column Temperature:** 35°C

**Sample Temperature:** 25°C

#### Discussion

A mixture of Acetonitrile : 0.037 g/L Disodium Edetate & 10.8 g/L of 1-Octane Sulfonic Acid (40:960) was prepared and degassed in an ultrasonic water bath for 5 minutes. It was then filtered through a 10  $\mu$ L filter under vacuum filtration.

The chromatographic analysis detected a significant peak at 42.840 minutes, representing Rosuvastatin Calcium with a tailing factor of 0.99, indicating a symmetrical peak. Theoretical plates for Rosuvastatin Calcium were calculated at 164762.07, indicating good chromatographic efficiency

For more information, Contact us at